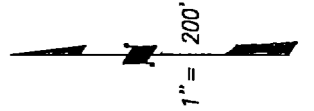


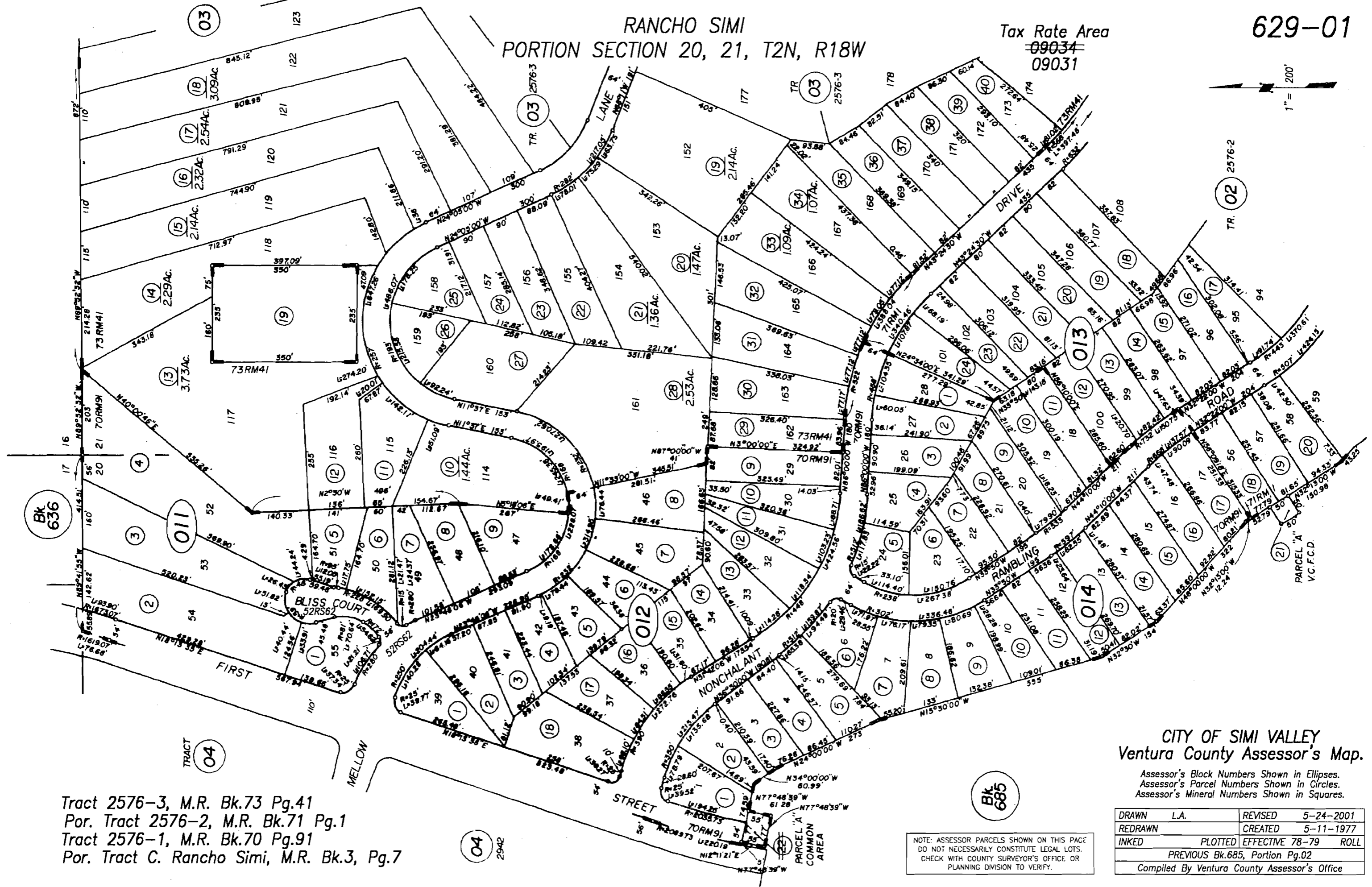
RANCHO SIMI  
PORTION SECTION 20, 21, T2N, R18W

Tax Rate Area  
~~09034~~  
09031

629-01



68-1011



Tract 2576-3, M.R. Bk.73 Pg.41  
 Por. Tract 2576-2, M.R. Bk.71 Pg.1  
 Tract 2576-1, M.R. Bk.70 Pg.91  
 Por. Tract C. Rancho Simi, M.R. Bk.3, Pg.7

NOTE: ASSESSOR PARCELS SHOWN ON THIS PAGE  
 DO NOT NECESSARILY CONSTITUTE LEGAL LOTS.  
 CHECK WITH COUNTY SURVEYOR'S OFFICE OR  
 PLANNING DIVISION TO VERIFY.

CITY OF SIMI VALLEY  
Ventura County Assessor's Map.

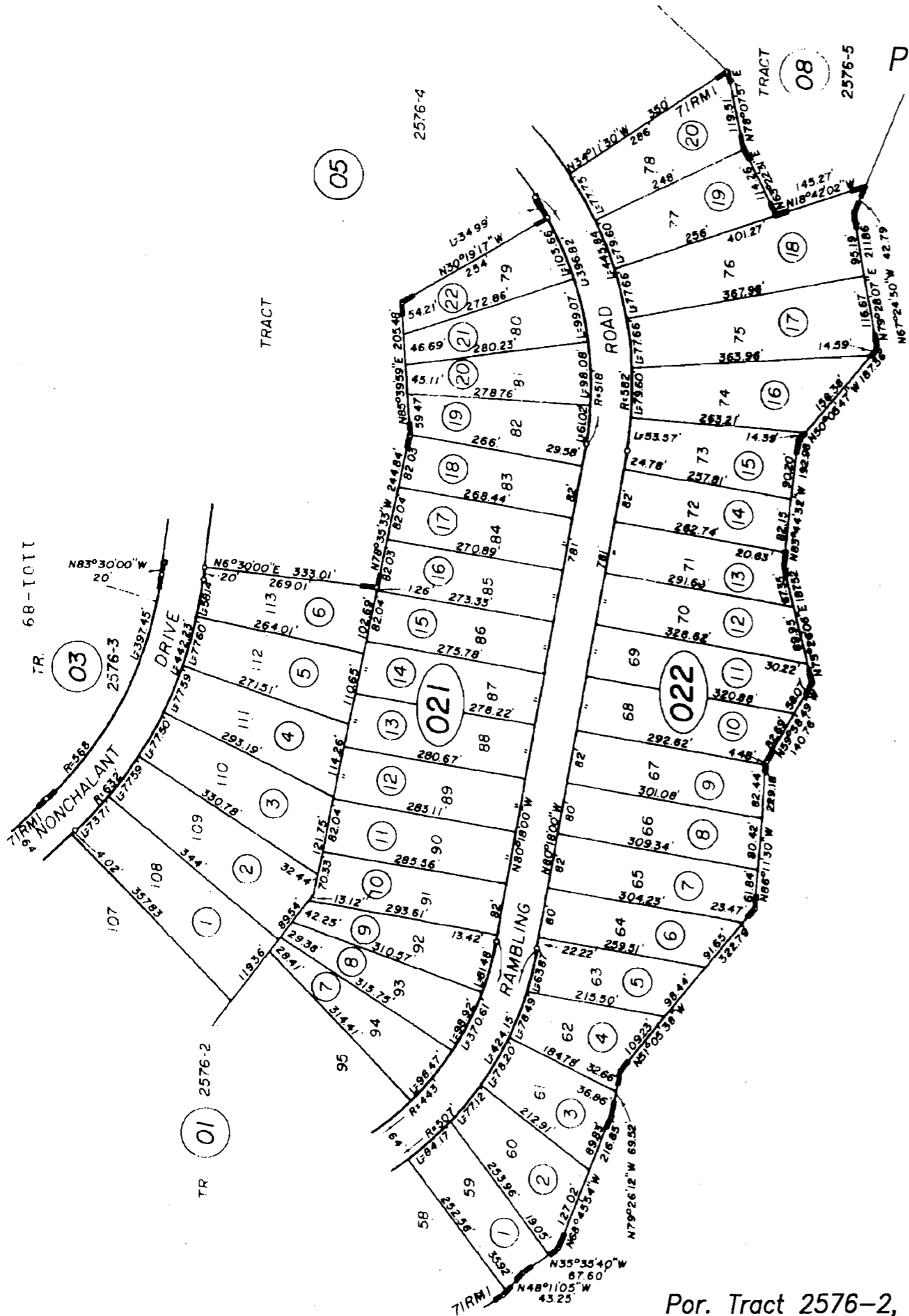
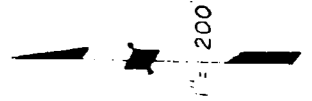
Assessor's Block Numbers Shown in Ellipses.  
 Assessor's Parcel Numbers Shown in Circles.  
 Assessor's Mineral Numbers Shown in Squares.

DRAWN	L.A.	REVISED	5-24-2001
REDRAWN		CREATED	5-11-1977
INKED	PLOTTED	EFFECTIVE	78-79 ROLL
PREVIOUS Bk.685, Portion Pg.02			
Compiled By Ventura County Assessor's Office			

RANCHO SIMI  
PORTION SECTIONS 20,21, T.2N., R.18W.

Tax Rate Area  
~~09034~~  
09031

629-02



Bk. 685

Por. Tract 2576-2, M.R. Bk.71, Pg.01

CITY OF SIMI VALLEY  
Ventura County Assessor's Map.

Assessor's Block Numbers Shown in Ellipses.  
Assessor's Parcel Numbers Shown in Circles.  
Assessor's Mineral Numbers Shown in Squares.

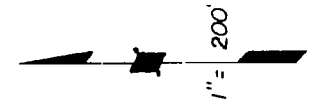
NOTE: ASSESSOR PARCELS SHOWN ON THIS PAGE  
DO NOT NECESSARILY CONSTITUTE LEGAL LOTS.  
CHECK WITH COUNTY SURVEYOR'S OFFICE OR  
PLANNING DIVISION TO VERIFY.

DRAWN	L.A.	REVISED	5-3-2002
REDRAWN		CREATED	5-12-77
INKED	PLOTTED	EFFECTIVE	78-79 ROLL
PREVIOUS Bk.685, Portion Pg.02			
Compiled By Ventura County Assessor's Office			

RANCHO SIMI  
PORTION SECTION 20,21, T.2N., R.18W.

Tax Rate Area  
09034  
09031

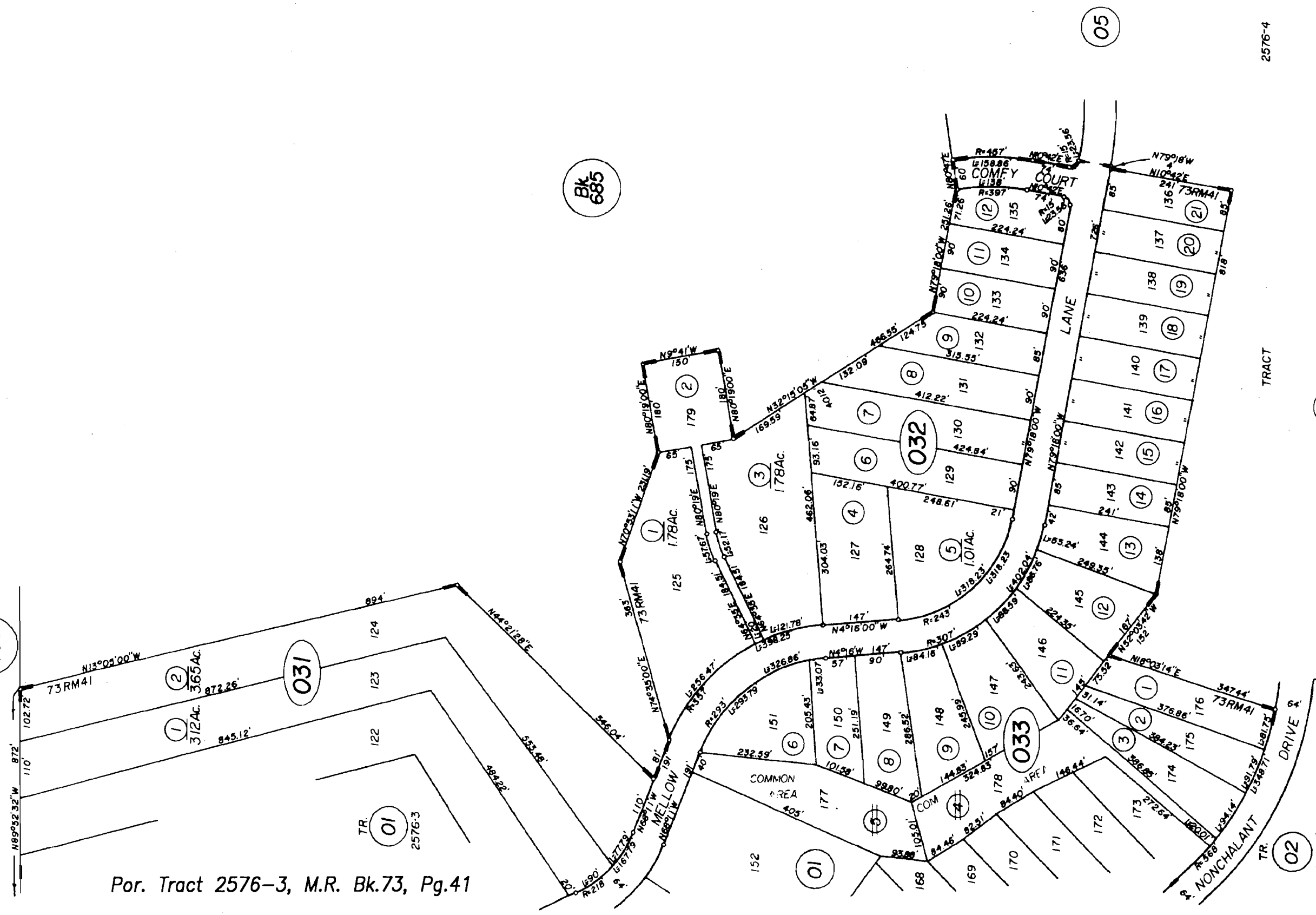
629-03



68-1011

Bk 636

Bk 685



NOTE: ASSESSOR PARCELS SHOWN ON THIS PAGE DO NOT NECESSARILY CONSTITUTE LEGAL LOTS. CHECK WITH COUNTY SURVEYOR'S OFFICE OR PLANNING DIVISION TO VERIFY.

CITY OF SIMI VALLEY  
Ventura County Assessor's Map.

Assessor's Block Numbers Shown in Ellipses.  
Assessor's Parcel Numbers Shown in Circles.  
Assessor's Mineral Numbers Shown in Squares.

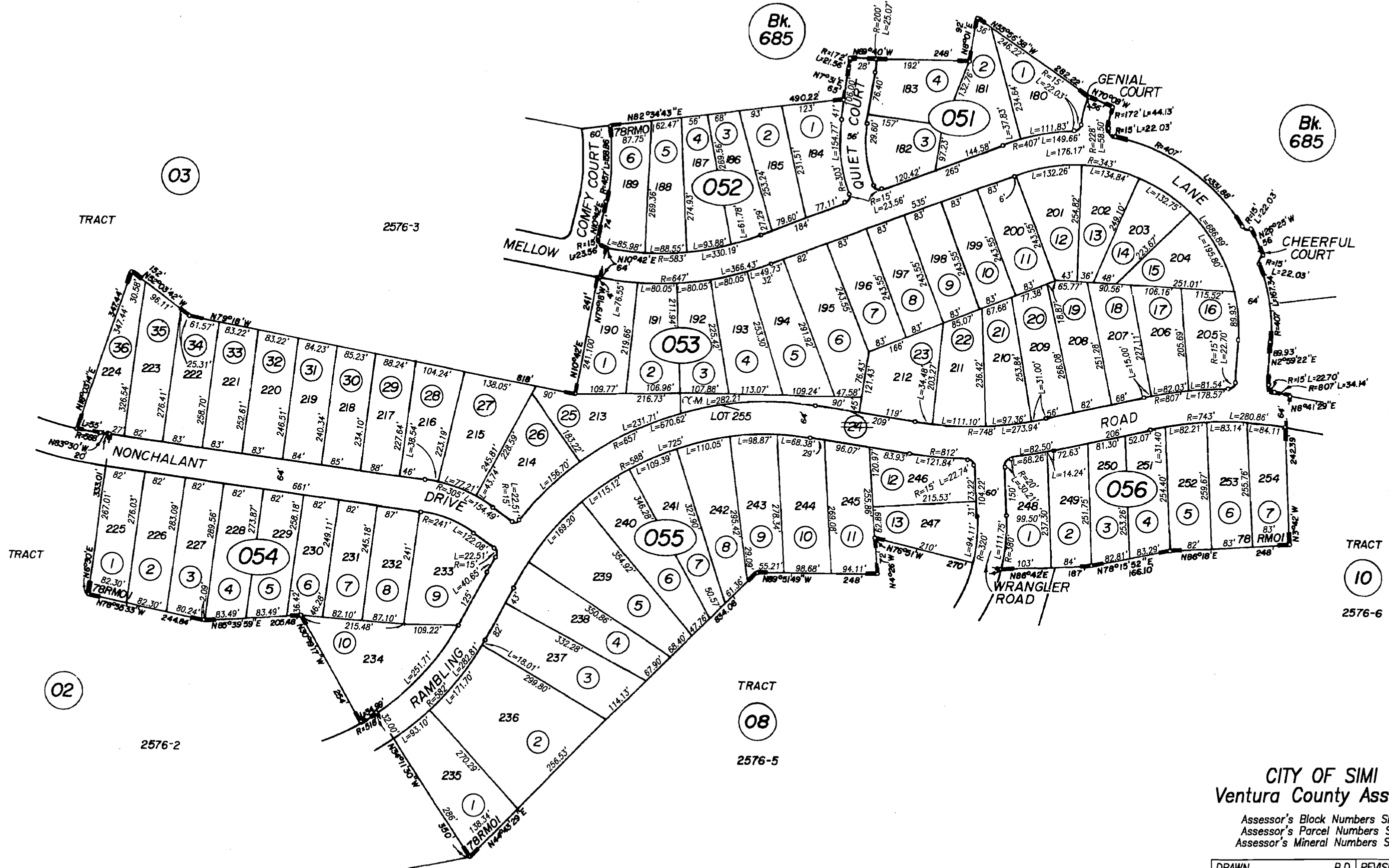
Por. Tract 2576-3, M.R. Bk.73, Pg.41

DRAWN	L.A.	REVISED	5-3-2002
REDRAWN		CREATED	11-01-77
LINKED	PLOTTED	EFFECTIVE	78-79 ROLL
PREVIOUS Bk.685, Portion Pg.02			
Compiled By Ventura County Assessor's Office			

RANCHO SIMI  
PORTION SECTION 21, T.2N., R.18W.

Tax Rate Area  
09031

629-05



CITY OF SIMI VALLEY  
Ventura County Assessor's Map.

Assessor's Block Numbers Shown in Ellipses.  
Assessor's Parcel Numbers Shown in Circles.  
Assessor's Mineral Numbers Shown in Squares.

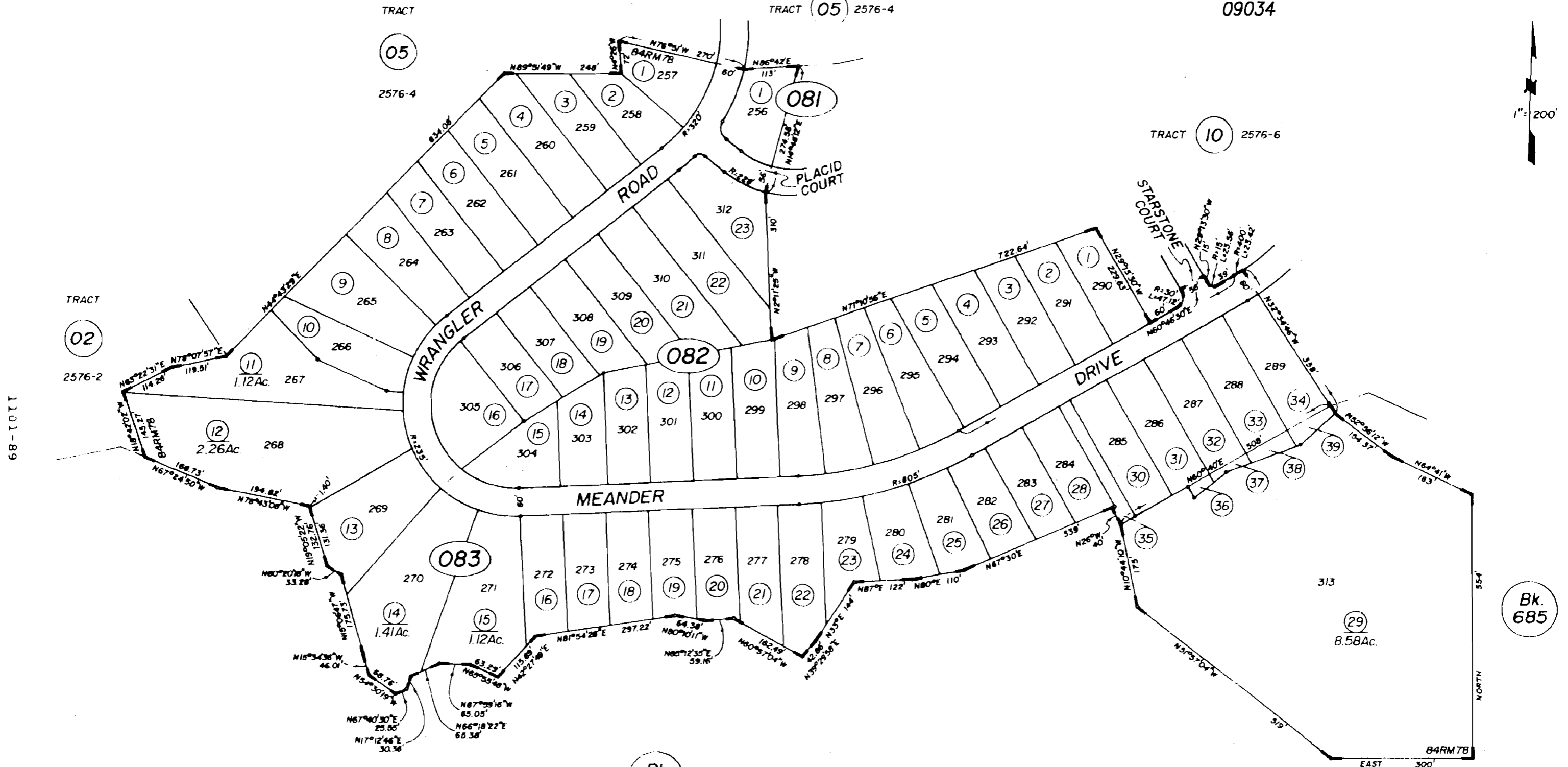
DRAWN	P.D.	REVISED	7-3-2002
REDRAWN		CREATED	11-20-78
INKED		PLOTTED	EFFECTIVE 79-80 ROLL
PREVIOUS Bk.685, Portion Pg.02			
Compiled By Ventura County Assessor's Office			

NOTE: ASSESSOR PARCELS SHOWN ON THIS PAGE  
DO NOT NECESSARILY CONSTITUTE LEGAL LOTS.  
CHECK WITH COUNTY SURVEYOR'S OFFICE OR  
PLANNING DIVISION TO VERIFY.

RANCHO SIMI, PORTION SECTION 21, T.2N., R.18W.

Tax Rate Area  
09031  
09034

629-08



Tract 2576-5, M.R. Bk.84, Pg.78

NOTE: ASSESSOR PARCELS SHOWN ON THIS PAGE DO NOT NECESSARILY CONSTITUTE LEGAL LOTS. CHECK WITH COUNTY SURVEYOR'S OFFICE OR PLANNING DIVISION TO VERIFY.

CITY OF SIMI VALLEY  
Ventura County Assessor's Map.

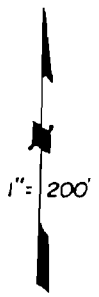
Assessor's Block Numbers Shown in Ellipses.  
Assessor's Parcel Numbers Shown in Circles.  
Assessor's Mineral Numbers Shown in Squares.

DRAWN	D.V.	REVISED	5-3-2002
REDRAWN		CREATED	2-29-80
INKED	PLOTTED	EFFECTIVE	80-81 ROLL
PREVIOUS Bk.685, Portion Pg.02			
Compiled By Ventura County Assessor's Office			

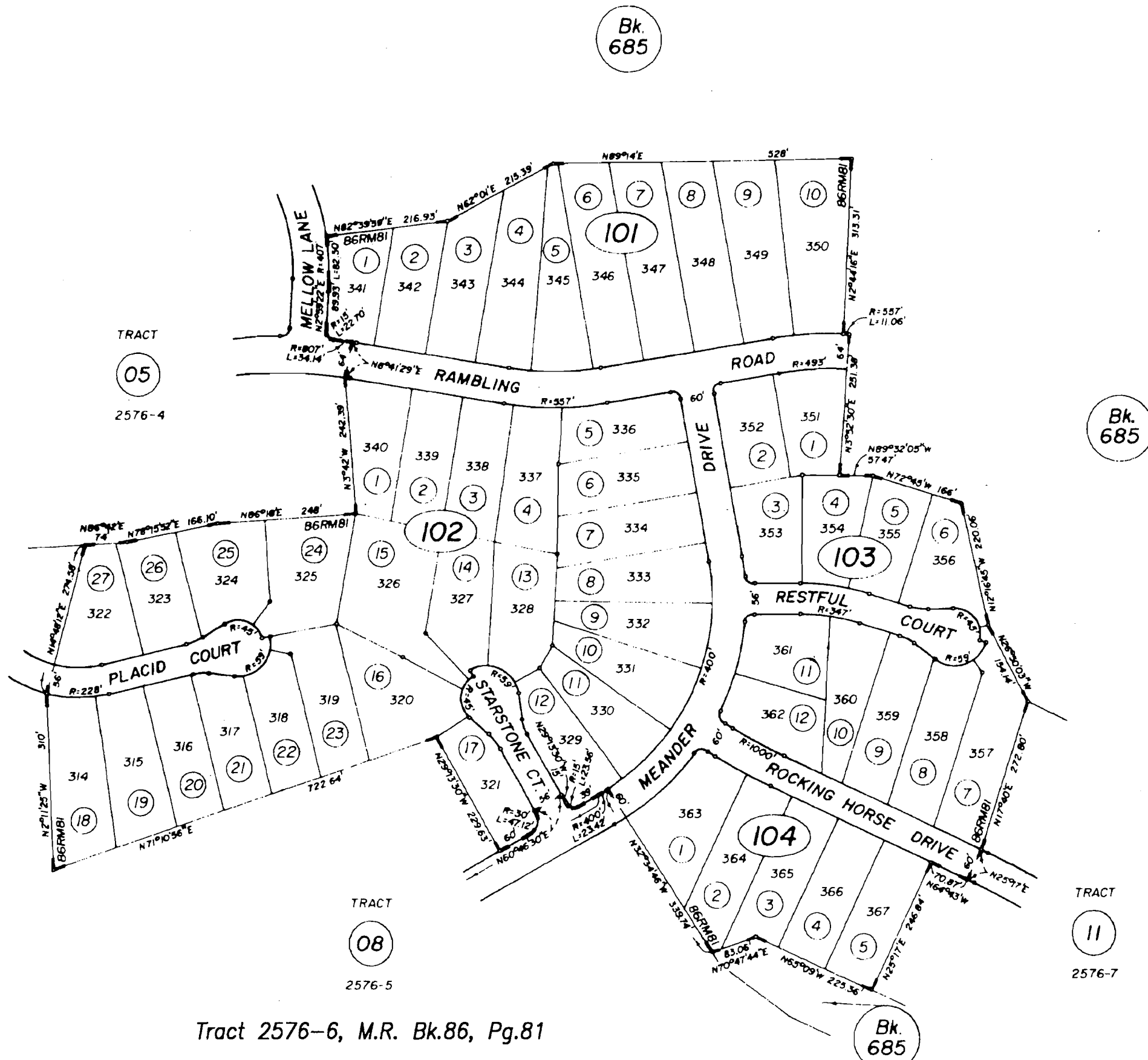
RANCHO SIMI, PORTION SECTION 21, T.2N., R.18W.

Tax Rate Area  
09031

629-10



68-1011



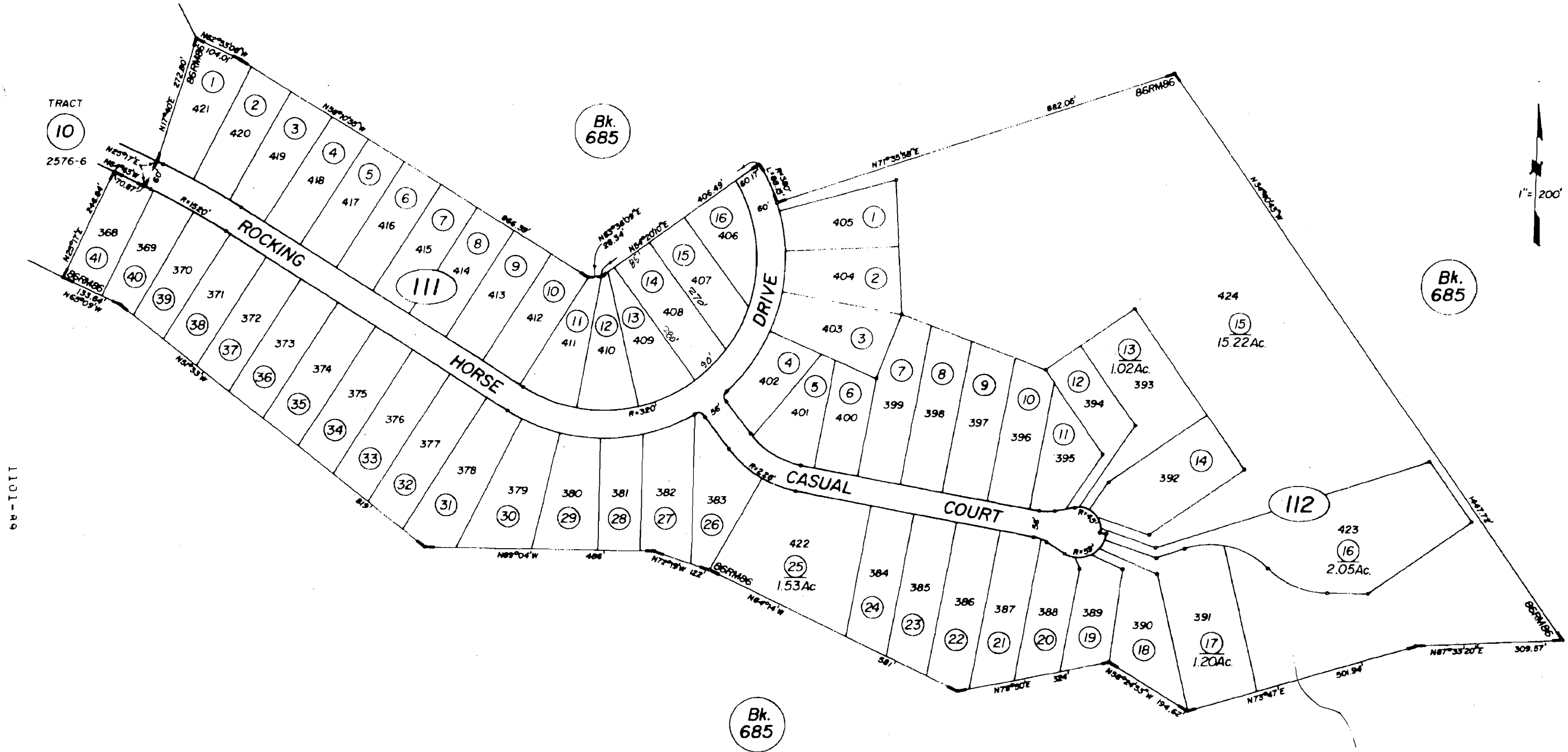
Tract 2576-6, M.R. Bk.86, Pg.81

CITY OF SIMI VALLEY  
Ventura County Assessor's Map.

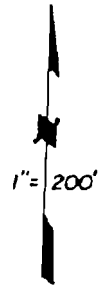
Assessor's Block Numbers Shown in Ellipses.  
Assessor's Parcel Numbers Shown in Circles.  
Assessor's Mineral Numbers Shown in Squares.

DRAWN	D.V.	REVISED	5-3-2002
REDRAWN		CREATED	9-30-80
INKED	PLOTTED	EFFECTIVE	81-82 ROLL
PREVIOUS Bk.685, Portion Pg.02			
Compiled By Ventura County Assessor's Office			

NOTE: ASSESSOR PARCELS SHOWN ON THIS PAGE  
DO NOT NECESSARILY CONSTITUTE LEGAL LOTS.  
CHECK WITH COUNTY SURVEYOR'S OFFICE OR  
PLANNING DIVISION TO VERIFY.



1101-89



Tract 2576-7, M.R. Bk.86, Pg.86

NOTE: ASSESSOR PARCELS SHOWN ON THIS PAGE DO NOT NECESSARILY CONSTITUTE LEGAL LOTS. CHECK WITH COUNTY SURVEYOR'S OFFICE OR PLANNING DIVISION TO VERIFY.

**CITY OF SIMI VALLEY  
Ventura County Assessor's Map.**

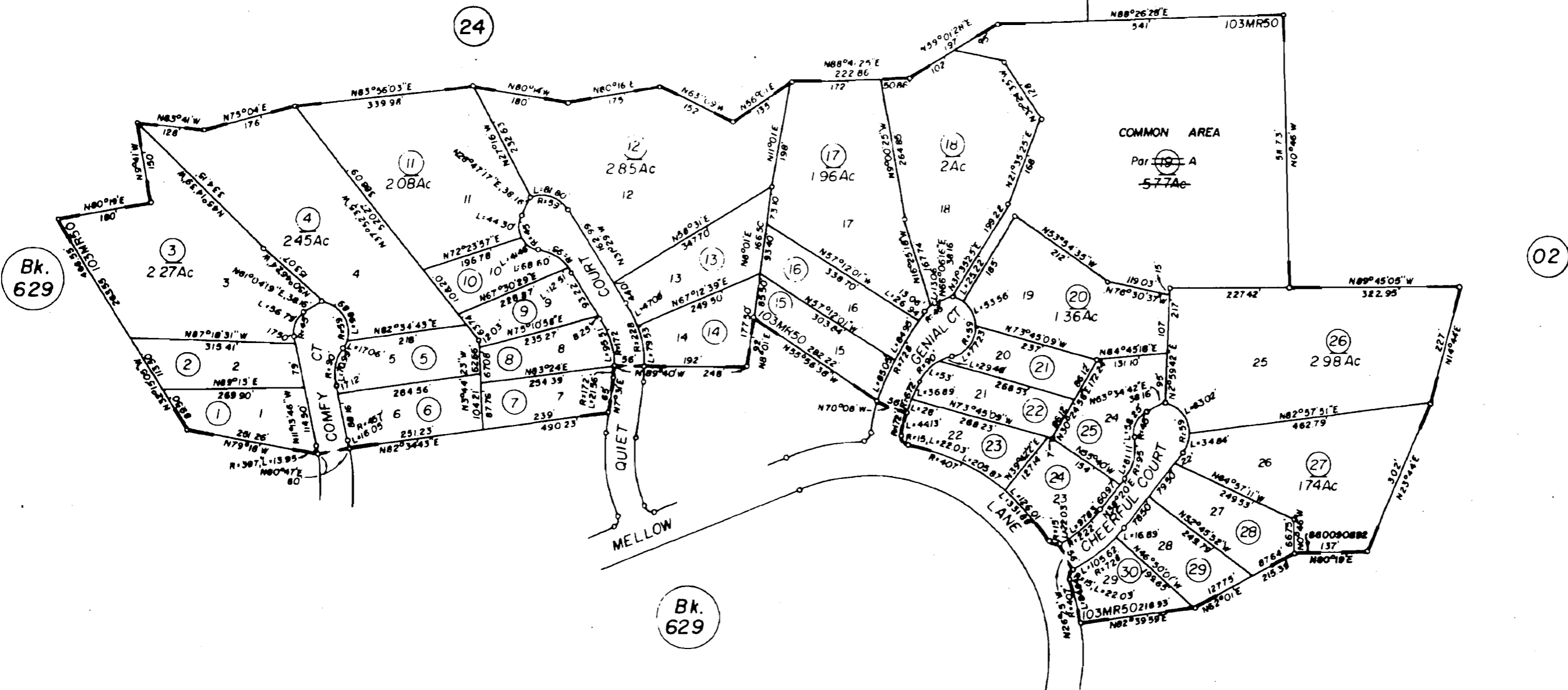
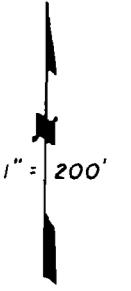
Assessor's Block Numbers Shown in Ellipses.  
Assessor's Parcel Numbers Shown in Circles.  
Assessor's Mineral Numbers Shown in Squares.

DRAWN	D.V.	REVISED	5-3-2002
REDRAWN		CREATED	10-2-80
INKED	PLOTTED	EFFECTIVE	81-82 ROLL
PREVIOUS Bk.685, Portion Pg.02			
Compiled By Ventura County Assessor's Office			

RANCHO SIMI  
 POR. SECTION 22, T2N, R18W

Tax Rate Area  
 09031

685-17



NOTE: ASSESSOR PARCELS SHOWN ON THIS PAGE  
 DO NOT NECESSARILY CONSTITUTE LEGAL LOTS.  
 CHECK WITH COUNTY SURVEYOR'S OFFICE OR  
 PLANNING DIVISION TO VERIFY.

CITY OF SIMI VALLEY  
 Ventura County Assessor's Map.

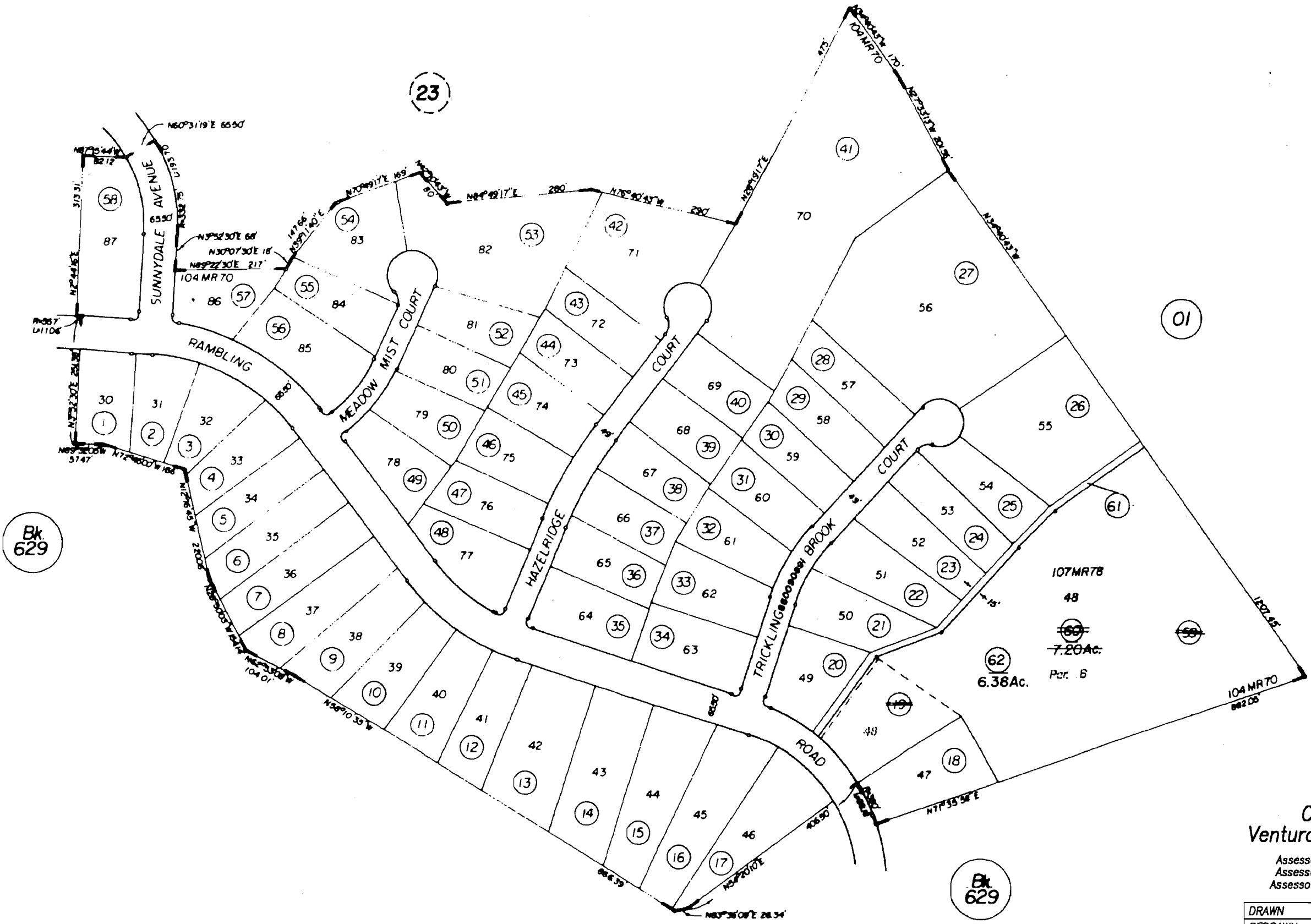
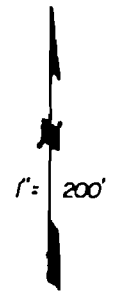
Assessor's Block Numbers Shown in Ellipses.  
 Assessor's Parcel Numbers Shown in Circles.  
 Assessor's Mineral Numbers Shown in Squares.

DRAWN	B.W.	REVISED	5-2-2002
REDRAWN		CREATED	1-8-86
INKED	PLOTTED	EFFECTIVE	86-87 ROLL
PREVIOUS Bk.685, Portion Pg.02			
Compiled By Ventura County Assessor's Office			

RANCHO SIMI  
 POR. SECTION 21, 22, T.2N, R.18W

Tax Rate Area  
 09031

685-18



Bk  
 629

Bk  
 629

CITY OF SIMI VALLEY  
 Ventura County Assessor's Map.

Assessor's Block Numbers Shown in Ellipses.  
 Assessor's Parcel Numbers Shown in Circles.  
 Assessor's Mineral Numbers Shown in Squares.

DRAWN	L.A.	REVISED	5-2-2002
REDRAWN		CREATED	3-17-86
INKED		PLOTTED	EFFECTIVE 86-87 ROLL
PREVIOUS Bk.685, Portion Pg.02			
Compiled By Ventura County Assessor's Office			

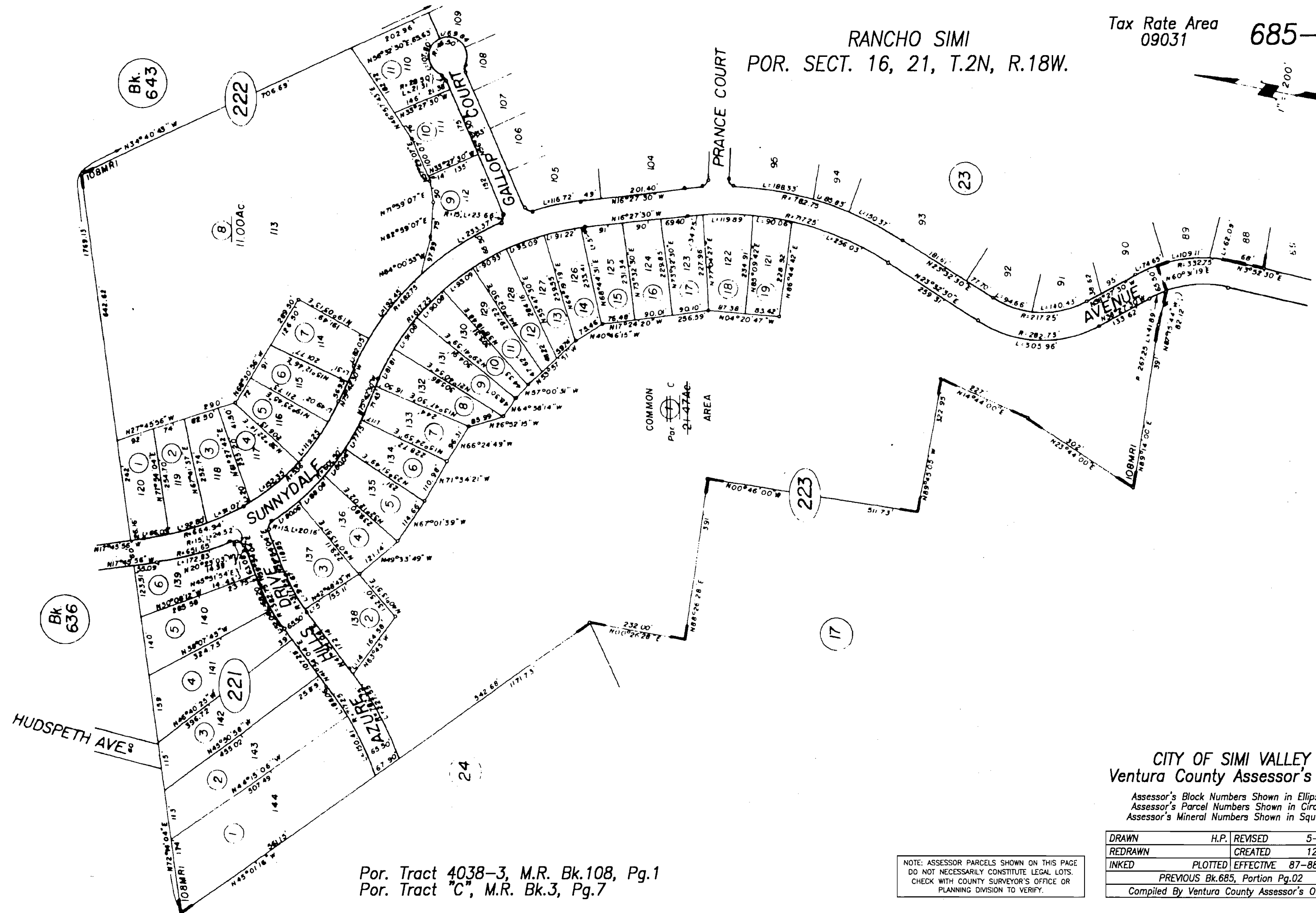
NOTE: ASSESSOR PARCELS SHOWN ON THIS PAGE  
 DO NOT NECESSARILY CONSTITUTE LEGAL LOTS.  
 CHECK WITH COUNTY SURVEYOR'S OFFICE OR  
 PLANNING DIVISION TO VERIFY.

Tract 4038-2, M.R. Bk.104, Pg.70 (Amended Map per M.R. Bk.107, Pg.78)

RANCHO SIMI  
POR. SECT. 16, 21, T.2N, R.18W.



68-1011



Por. Tract 4038-3, M.R. Bk.108, Pg.1  
Por. Tract "C", M.R. Bk.3, Pg.7

NOTE: ASSESSOR PARCELS SHOWN ON THIS PAGE  
DO NOT NECESSARILY CONSTITUTE LEGAL LOTS.  
CHECK WITH COUNTY SURVEYOR'S OFFICE OR  
PLANNING DIVISION TO VERIFY.

CITY OF SIMI VALLEY  
Ventura County Assessor's Map.

Assessor's Block Numbers Shown in Ellipses.  
Assessor's Parcel Numbers Shown in Circles.  
Assessor's Mineral Numbers Shown in Squares.

DRAWN	H.P.	REVISED	5-2-2002
REDRAWN		CREATED	12-11-86
INKED	PLOTTED	EFFECTIVE	87-88 ROLL
PREVIOUS Bk.685, Portion Pg.02			
Compiled By Ventura County Assessor's Office			

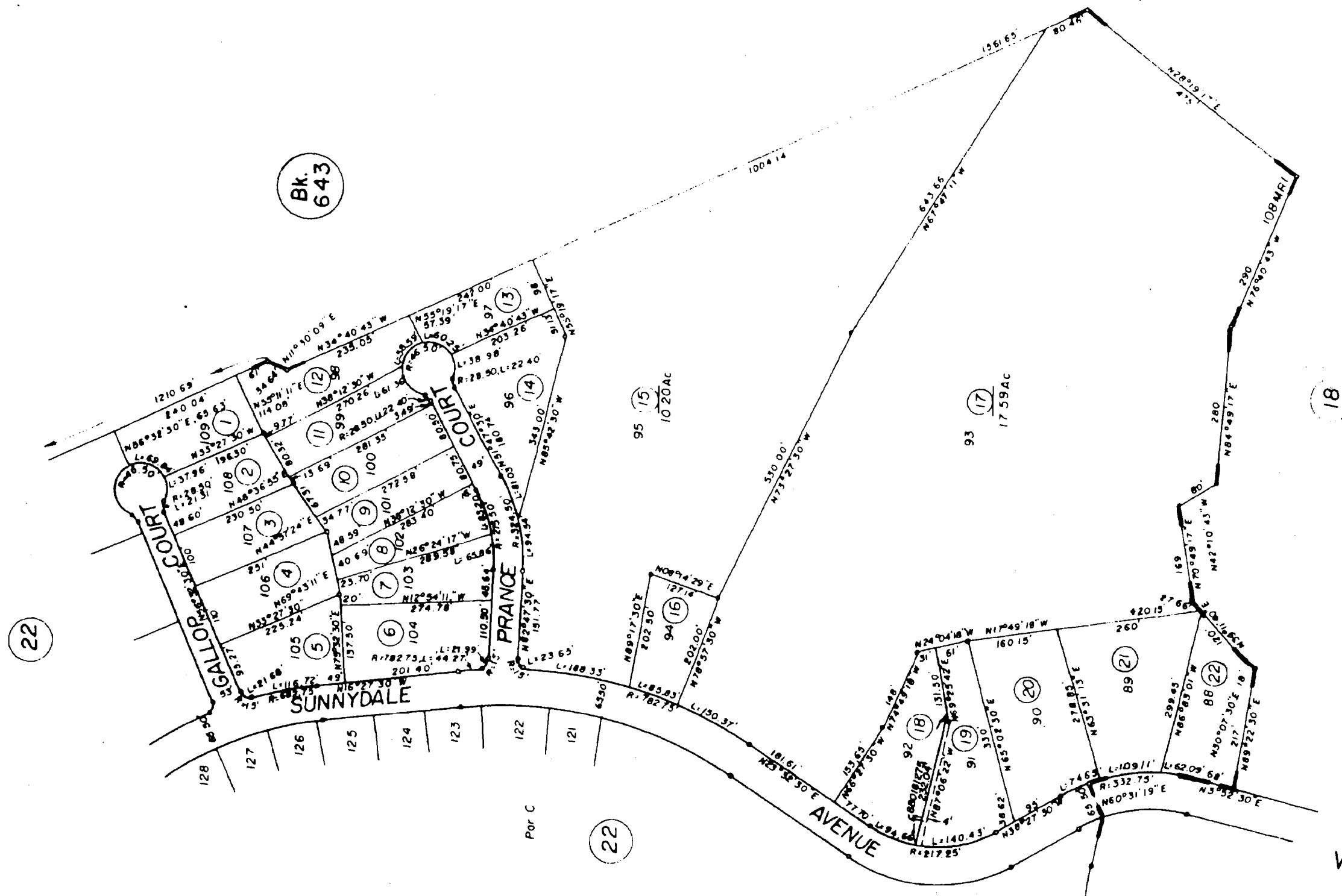
RANCHO SIMI  
 POR. SECT. 21, 22, T.2N., R.18W.

Tax Rate Area  
 09031

685-23



68-1011



Por. Tract 4038-3, M.R. Bk.108, Pg.1

NOTE: ASSESSOR PARCELS SHOWN ON THIS PAGE  
 DO NOT NECESSARILY CONSTITUTE LEGAL LOTS.  
 CHECK WITH COUNTY SURVEYOR'S OFFICE OR  
 PLANNING DIVISION TO VERIFY.

CITY OF SIMI VALLEY  
 Ventura County Assessor's Map.

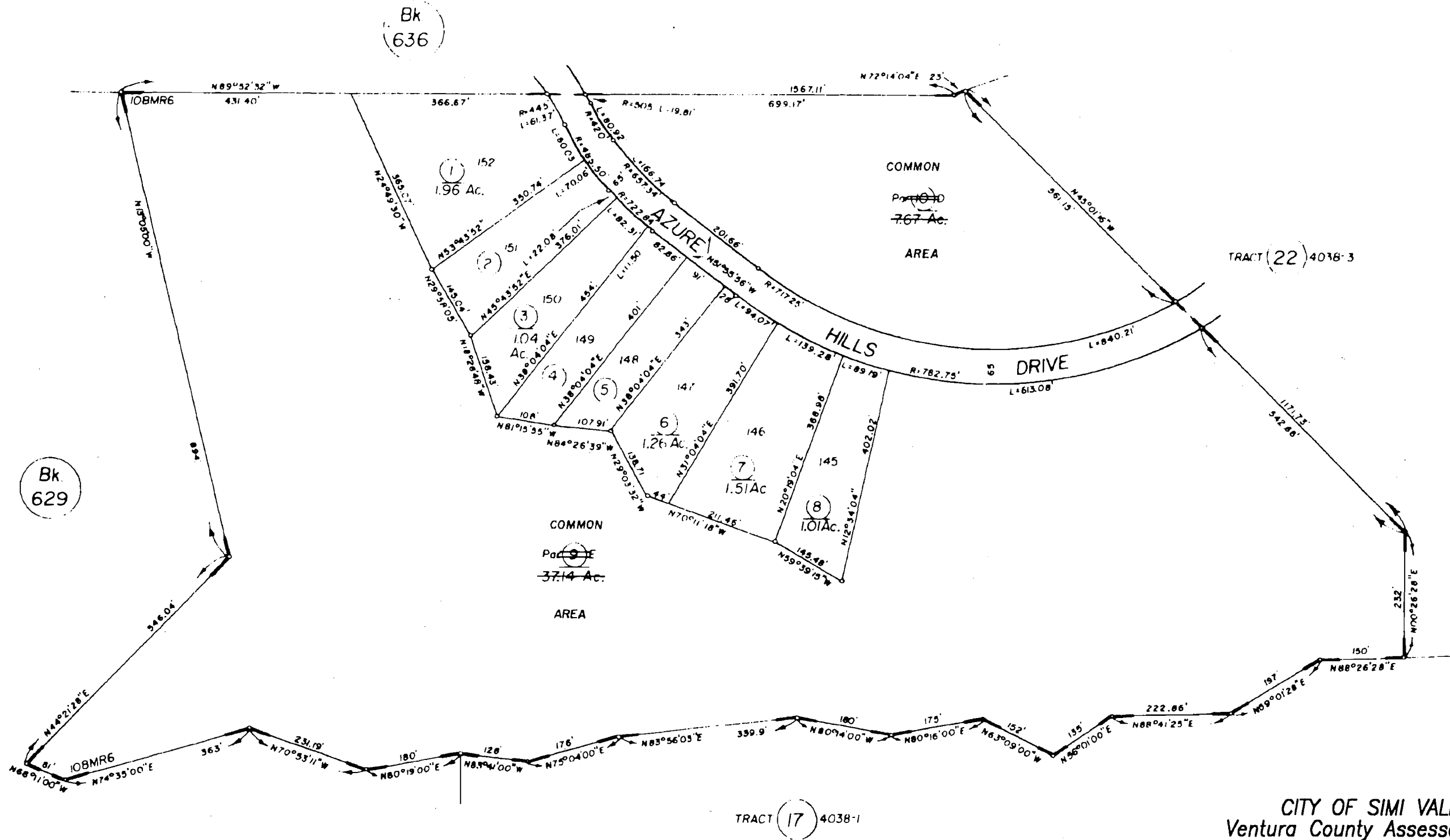
Assessor's Block Numbers Shown in Ellipses.  
 Assessor's Parcel Numbers Shown in Circles.  
 Assessor's Mineral Numbers Shown in Squares.

DRAWN	H.P.	REVISED	5-2-2002
REDRAWN		CREATED	12-11-86
INKED	PLOTTED	EFFECTIVE	87-88 ROLL
PREVIOUS Bk.685, Portion Pg.02			
Compiled By Ventura County Assessor's Office			

RANCHO SIMI  
PORTION SECTION 21, T2N, R18W

Tax Rate Area  
09031

685-24



CITY OF SIMI VALLEY  
Ventura County Assessor's Map.

Assessor's Block Numbers Shown in Ellipses.  
Assessor's Parcel Numbers Shown in Circles.  
Assessor's Mineral Numbers Shown in Squares.

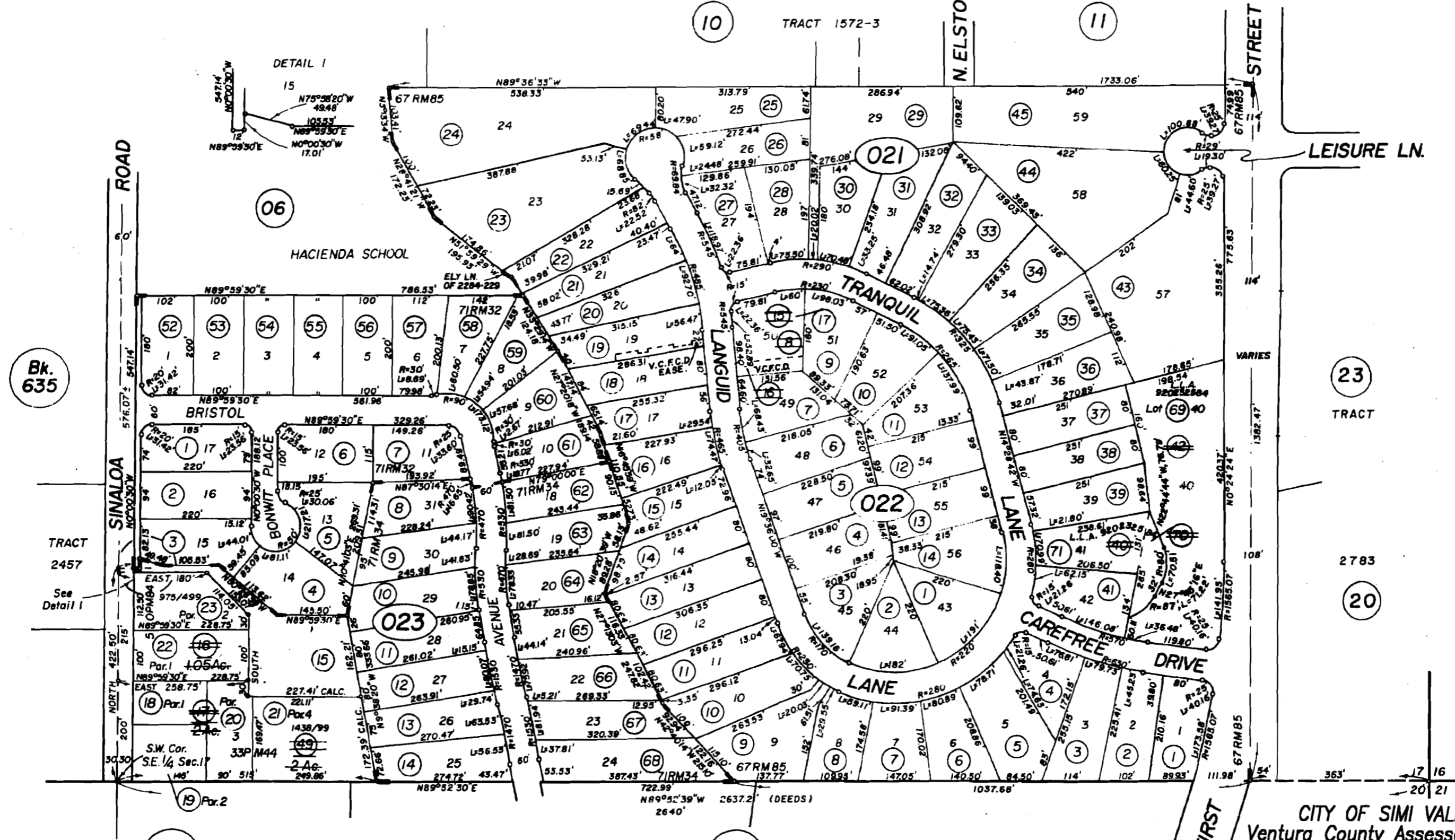
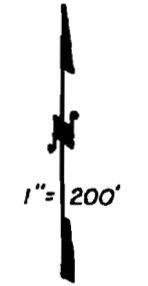
DRAWN	S.H.N.	REVISED	5-2-2002
REDRAWN		CREATED	12-11-86
INKED	PLOTTED	EFFECTIVE	87-88 ROLL
PREVIOUS Bk.			
Compiled By Ventura County Assessor's Office			

NOTE: ASSESSOR PARCELS SHOWN ON THIS PAGE DO NOT NECESSARILY CONSTITUTE LEGAL LOTS. CHECK WITH COUNTY SURVEYOR'S OFFICE OR PLANNING DIVISION TO VERIFY.

RANCHO SIMI  
PORTION SE 1/4 SEC.17, T.2N., R.18W.

Tax Rate Area  
09006  
09016

636-02



Bk. 635

Bk. 685

Bk. 629

Tract 2276-1, M.R. Bk.71, Pg.32  
 Tract 2276-2, M.R. Bk.71, Pg.34  
 Sub.1, Land of Simi Land & Water Co. (Valley of Simi), M.R. Bk.3, Pg.2  
 Rancho Simi, M.R. Bk.3, Pg.7  
 Tract 2476, M.R. Bk.67, Pg.85

NOTE: ASSESSOR PARCELS SHOWN ON THIS PAGE  
DO NOT NECESSARILY CONSTITUTE LEGAL LOTS.  
CHECK WITH COUNTY SURVEYOR'S OFFICE OR  
PLANNING DIVISION TO VERIFY.

CITY OF SIMI VALLEY  
Ventura County Assessor's Map.

Assessor's Block Numbers Shown in Ellipses.  
Assessor's Parcel Numbers Shown in Circles.  
Assessor's Mineral Numbers Shown in Squares.

DRAWN	N.Z.	REVISED	5-7-2002
REDRAWN		CREATED	4-30-63
INKED		PLOTTED	EFFECTIVE 64-65 ROLL
PREVIOUS Bk.640, Portion Pg.02			
Compiled By Ventura County Assessor's Office			